

ZOOMLION

NEW ZT186J

TELESCOPIC BOOM LIFT

ANSI/CSA Certified

FEATURES

Standard Features

- ▶ Horn
- ▶ Proportional control
- ▶ All motion alarm
- ▶ Flashing beacon
- ▶ Self-closing entry gate
- ▶ Emergency descent system
- ▶ Emergency stop button
- ▶ Auto-leveling system
- ▶ On-board diagnostic system
- ▶ Tilt protection system
- ▶ Load sensing system
- ▶ 4.3' Led display
- ▶ Swing-out engine tray
- ▶ Anemograph

Accessories & Options

- ▶ Platform work light
- ▶ Anti-collision device

HIGHLIGHTS

- ▶ Work height up to 192ft 11in and horizontal outreach up to 83ft 8in
- ▶ Industry's first polygonal innovative boom, boom weight reduced by more than 10%, vertical stiffness increased by 25%, torsion resistance increased by 20%, and offers small deformation and stable control
- ▶ X outrigger offers larger working envelope, stronger off-road ability, and better stability
- ▶ Intelligent control of four-wheel steering ensure coordination and consistency of outriggers during steering and expansion
- ▶ All-wheel steering angles are automatically matched ensure straight travel
- ▶ Five-section boom synchronously extends, efficient and stable

ACCESS WITH ZOOMLION GREEN

Phone: 1 (833) USA-ZOOM
E-mail: sales@zoomlion-na.com

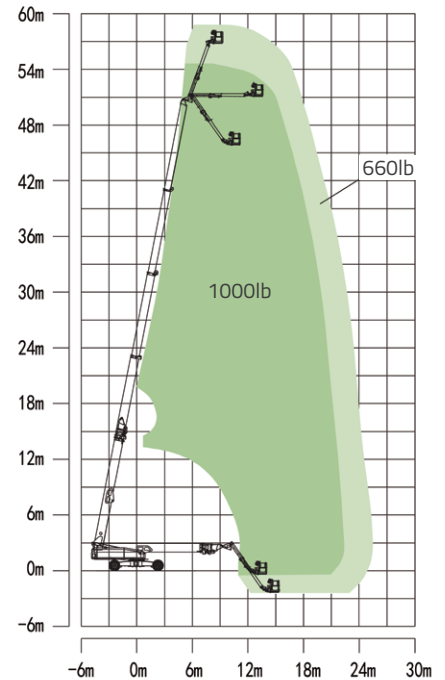
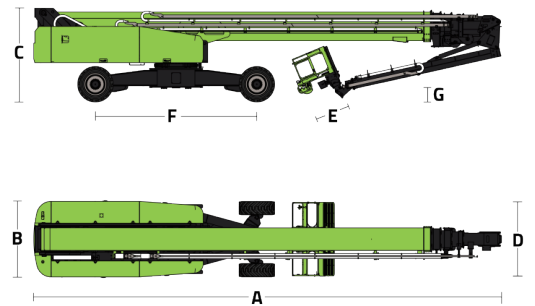
Add: Zoomlion Heavy Industry NA, Inc. 14215 Two Mile Road, Yorkville, WI 53126
Web: www.zoomlion-na.com

MAIN SPECS OF TELESCOPIC BOOM LIFT

ZT186J

Comply with ANSI/CSA Standard

Model	ZT186J	
	Metric	Imperial
Size		
Work Height	58.8m	192ft 11in
Platform Height	56.8m	186ft 4in
Horizontal Outreach	25.5m	83ft 8in
A - Stowed Length	14.4m	47ft 3in
B - Stowed Width	2.5m	8ft 2in
C - Stowed Height	3.06m	10ft
D - Platform Length	2.44m	8ft
E - Platform Width	0.91m	3ft
F - Wheelbase	5.357/4.69m	17ft 7in/15ft 5in
Tread	2.5/5.15m	8ft 2in/16ft 11in
G - Ground Clearance	0.40m	1ft 4in
Performance		
Platform Capacity (Unrestricted/Restricted)	300/454kg	660/1000lb
Drive Speed (Stowed)	4.5km/h	2.8mph
Gradeability	45%(24°)	
Turning Radius (Inside)	6.79/2.57m	22ft 3in/8ft 5in
Turning Radius (Outside)	8.43/6.39m	27ft 8in/20ft 12in
Turntable Swing	360° continuous	
Platform Rotation	±90°	
Tail Swing	2.25m	7ft 5in
Jib (Range of Articulation)	125° (-55° ~ 70°)	
Max. Wind Speed	12.5m/s	28mph
Power		
Engine	Cummins F3.8(EU V) 75kW/2200rpm Cummins QSF3.8(EU III)	
Fuel Tank Capacity	200L	52.8gal
Control Voltage	12V DC	
Hydraulic Tank Capacity	400L	105gal
Drive Mode	4WD	
Steering Mode	Four wheels/Front wheel/Crab	
Tire		
Type	445/50 D710 Foam-filled Tires	
Weight		
Gross	29600kg	65256lb



Range of Motion ZT186J